

## Optional Accessories



**Confetti/Streamer Adapter 2" - 2 1/4"**  
**\$99 each**  
 This adapter unit comes with a poly resin adapter plate and a 20" clear Lexan tube (2" round) that adapts easily with thumb screws to your launcher for shooting streamers and confetti with exciting results



**Extra CO<sup>2</sup> Tank with On/Off Valve**  
*(for Micro Mini and 8-Ball Shooter )*  
**\$45 each**



**Deluxe Co2 Fill Station**  
**\$80 each**  
**Deluxe Two Valve CO<sub>2</sub> Cylinder Fill Station**



**Replacement Gauge**  
**\$20 each**



**O-Rings(pack of 10)**  
**\$5.00 per pack**

**O Rings** - O Rings are used to seal your CO2 bottle into your launcher, occasionally they become damaged, worn and will need replacing.



**Digital Scale**  
**\$35 each**

This optional accessory allows you fill your own CO2 tanks by weighing them accurately



[www.TSHIRTGUN.com](http://www.TSHIRTGUN.com)



## MICRO-MINI T-SHIRT LAUNCHER MANUAL



(Micro-Mini launcher shown here with standard Padded Road Case, 20 oz CO2 bottle, maintenance kit, Owner's Manual, and Lifetime Warranty Registration Card)



**WARNING!** The T-Shirt Launcher Series are not toys. Misuse may cause serious injury or death. **The launcher should never be pointed at any person or animal!!** Recommended at least 18 years of age to operate. Use of CO2 air source required for proper operation – note: no other air types should be used with these devices. PSI should not exceed 350psi on the Micro Mini.

## Cleaning and Lubrication

The anodized parts of your launcher should be cleaned off with a damp cloth. Always use War Machine replacement parts.

## Operation and Use (It's as easy as 1-2-3)

**Step 1:** Attach CO2 Air source by screwing bottle into launcher.

**Step 2:** Turn CO2 tank valve 90 degrees to charge launcher.

**Step 3:** Pull trigger to shoot.

### Other Operating Instructions

After you turn the CO2 tank on to charge the launcher, you may turn the valve back to the OFF position to shut off the air source and manually charge the launcher before each shot. If you choose to leave the valve in the ON position, the launcher will automatically re-charge after each shot. Either method will work fine, however, when you are finished shooting, remember to discharge the launcher with the valve in the OFF position before disconnecting and packing up the launcher.

**CAUTION: NEVER UNSCREW THE CO2 TANK FROM THE LAUNCHER WITHOUT FIRST HAVING THE CO2 TANK IN THE OFF POSITION AND DISCHARGING FULLY.**

### Launching Tips:

Hold launcher away from body and use both hands firmly to shoot. Do not point at anything you do not intend to shoot. Do not load any projectile that is not specifically recommended for use in the launcher. Do not place your hands inside the tube while the launcher is charged. Do not lay the launcher down on any surface before discharging.



Remember – you can shoot almost anything in the Micro-Mini as long as it's soft and doesn't pose a risk of injury when flying through the air at fast speeds.



STREAMERS AND CONFETTI

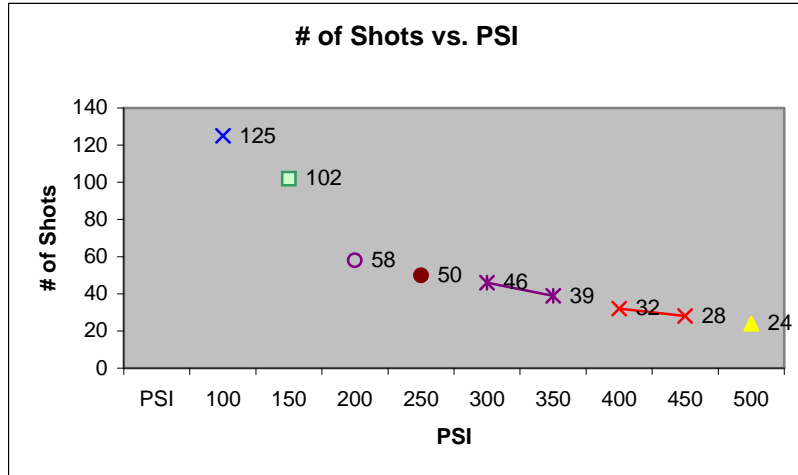


CUSTOM IMPRINTED ANTENNA BALLS



## Tech Info

Here is an example of the # of shots you can expect from a 20oz. CO<sup>2</sup> bottle. Note that the weight of the t-shirt, temperatures & weather conditions, & the angle at which you launch affects the distance and # of shots greatly. The optimum launch angle is 32 degrees. You should experiment with your launcher to obtain the optimum distance & air usage for your individual setting.



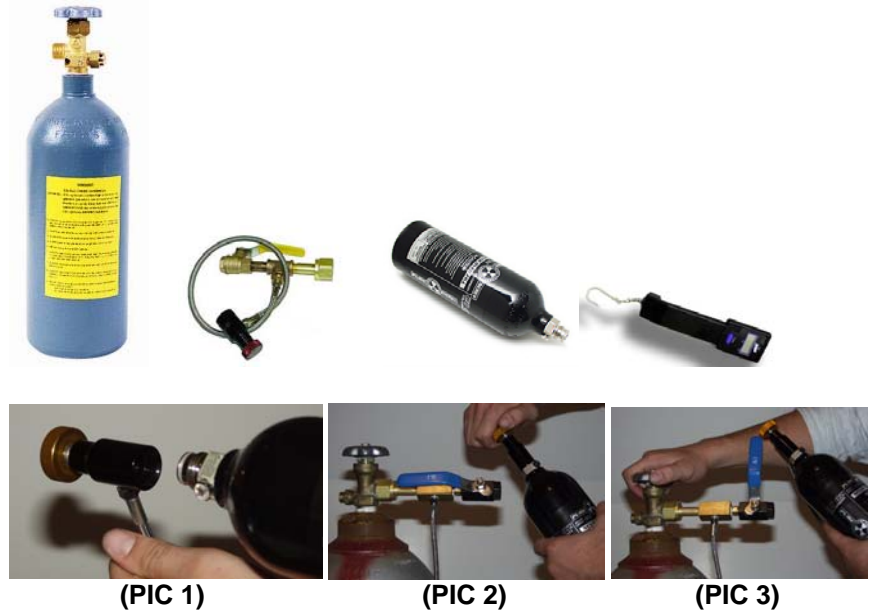
### \*\*\* CAUTION – FEDERAL LAW \*\*\*

All CO<sub>2</sub> must be emptied from tanks before air travel or shipping via common carriers. This is a Federal Regulation subject to heavy fines. Be sure to empty/bleed all air from your tanks using the method described above.

**DO NOT exceed 350psi on the Micro Mini.**

## TO FILL YOUR OWN CO<sub>2</sub> TANKS:

**You will need: A 20lb or larger bulk tank from your local Gas/Welding supplier, a CO<sub>2</sub> Fill Station (optional accessory), and your CO<sub>2</sub> tanks. (A digital 10lb scale is also highly recommended)**



**To fill the tank:** Filling a CO<sub>2</sub> tank is simple but it can be dangerous if you are not careful. Screw the tank into your fill adapter (PIC 1) and tighten down the pin depressor until you feel resistance. (PIC 2) With the bleed valve open (shown in PIC 2), any CO<sub>2</sub> in your tank will escape, chilling the tank. If your tank is empty, you should close the bleed valve on the fill station (PIC 3), open the valve on your bulk tank (PIC 3) and fill to about 2oz on your scale. Turn bulk tank OFF and open bleed valve to empty your CO<sub>2</sub> tank and chill. (PIC 3) Now you are ready to fill your tank. With the bleed valve closed on your fill station and the bulk tank turned on, you will fill a twenty-ounce tank to about seventeen ounces. This way if the gas expands, your tank pressure will not rise above safe levels. Close your bulk tank valve, and unscrew the fill adapter until you feel the resistance of the valve pin decrease sufficiently. Open the bleed valve to bleed the excess CO<sub>2</sub> that's in the line and unscrew the CO<sub>2</sub> tank. Your 20oz tank is now filled. Repeat as needed for multiple tank fills.

# Limited Lifetime Warranty

War Machine Inc. warranties to initial retail purchaser that the product is free from defects in materials and workmanship, subject to the limitations of the warranty. Disposable parts (o-rings, seals etc) are not warranted. The use of non sanctioned accessories or upgrades is not covered and will void your warranty. This warranty does not cover aesthetic damages (scratches, dents and nicks) misuse, or improper disassembly and re-assembly, or attempts made to drill holes, remove metal or modify this product from its original state, which could cause pressure safety factors or degrade the performance. This warranty does not cover failures due to wear and tear, exposure to the elements or extreme conditions. This warranty is limited to the repair or replacement of defective parts with the customer to pay shipping costs. This limited lifetime warranty is effective to the original customer with proof of purchase and proper warranty registration. The warranty is non-transferable. Repair or replacement of defective material is at the discretion of WAR MACHINE INC.

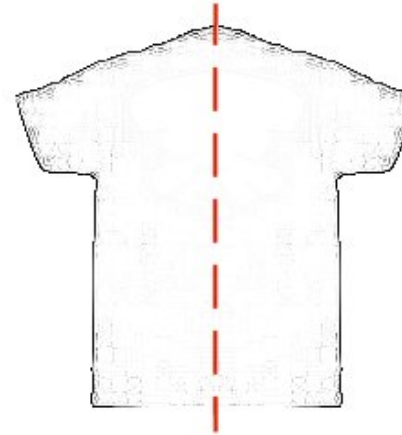
## Warranty Claim/Return Policy

For any warranty return/claim needed, please contact our RMA claims department at 1-864-877-1179. An RMA number must be issued prior to any warranty return. Please be sure to mail your warranty registration card found in your shipping package for proper registration of your War Machine Product. All returns will be shipped pre-paid to:

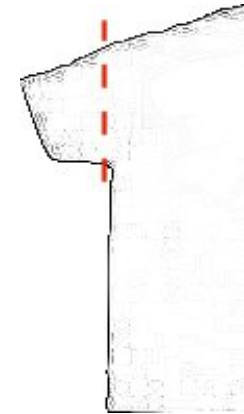
**War Machine Warranty Depot**  
1425 W Wade Hampton Blvd  
Greer, SC 29650

## Folding Tips for T-Shirts

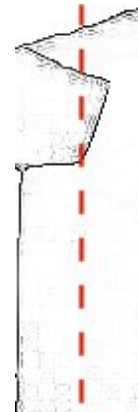
1. Fold T-Shirt in half



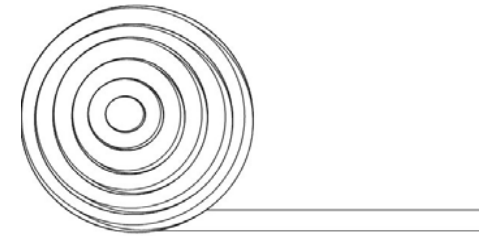
2. Fold Sleeves in



3. Fold in half again



4. Starting from the neck, begin a *tight* roll. As the roll is done, a slight pull on the opposite end will insure the tightness of the roll.



5. Test to make sure the shirt fits into the barrel of the launcher easily – if it does, the roll should be secured with rubber bands, balloons, tape, etc. to make sure it maintains a tight roll.

**Note:** The tighter the shirt fits into the barrel, the farther it will travel. Likewise, distance is affected by how loose the roll is in the barrel. A tightly rolled shirt will go farther in distance than a loosely rolled shirt.