

TSHIRTGUN.com



Gatling Gun T-shirt Launcher

Assembly Manual

Thank you for purchasing

PARTS LIST

PROCESS 1

ATTACHING THE WHEELS TO THE STAND

Tools needed: 3/4" wrench & adjustable wrench

1. Insert the leg shaft into the stand.
2. Place the provided threaded bolt into the hole to secure the shaft. (FIG 1.)
3. Place the provided nut onto the bolt and tighten as shown. (FIG 2.)
4. Repeat Process for the remaining two legs.



FIG 1.



FIG 2.



PROCESS 2

ATTACHING THE BACKBONE ASSEMBLY

Tools needed: 3/4" wrench & adjustable wrench

1. Place the backbone assembly onto the shaft of the stand as shown (FIG 4) making sure that the spring loaded lockpin is engaged.



BACKBONE ASSEMBLY



FIG 4.

2. Place the 3/4" bolt into the mounting hole as shown inserting it through the shaft. (FIG 5.)



FIG 5.

3. Place the nut on the 3/4" bolt and tighten. (FIG 6.)



FIG 6.



SIDE VIEW OF BACKBONE/STAND MOUNTING JOINT

PROCESS 3

ATTACHING THE SHAFT

1. Place non-threaded end of the shaft into the backbone assembly. Work it slowly as it is a slip fit.(FIG 7.) Be careful not to pinch any of the wires inside the assembly. Slide it in until 1.5 inches are exposed out the back of the plate. (FIG 8.)



FIG 7.



FIG 8.

2. Secure the shaft with the supplied 1/8" allen screws(FIG 9.)



FIG 9.

3. Connect the power from the chassis. (FIG 10.)

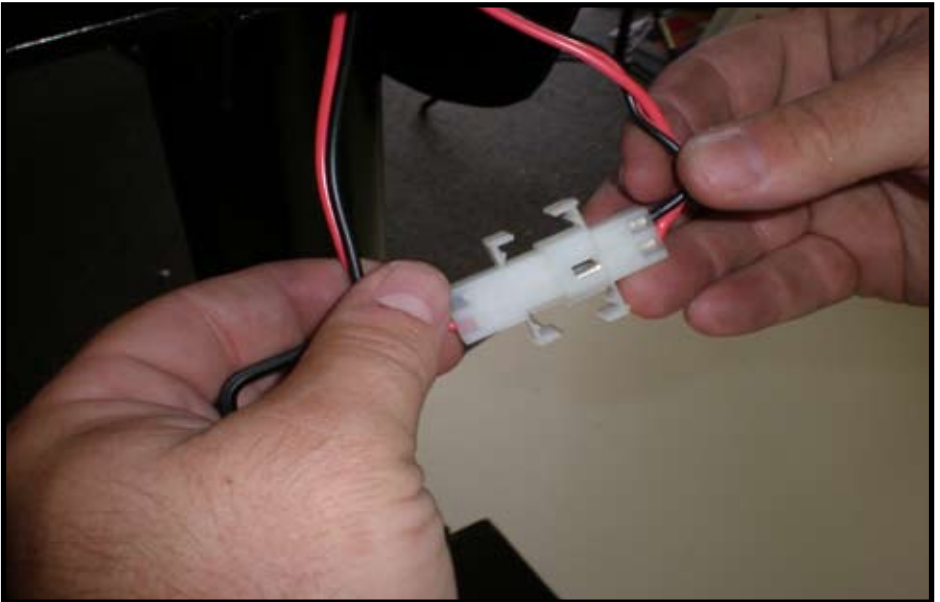
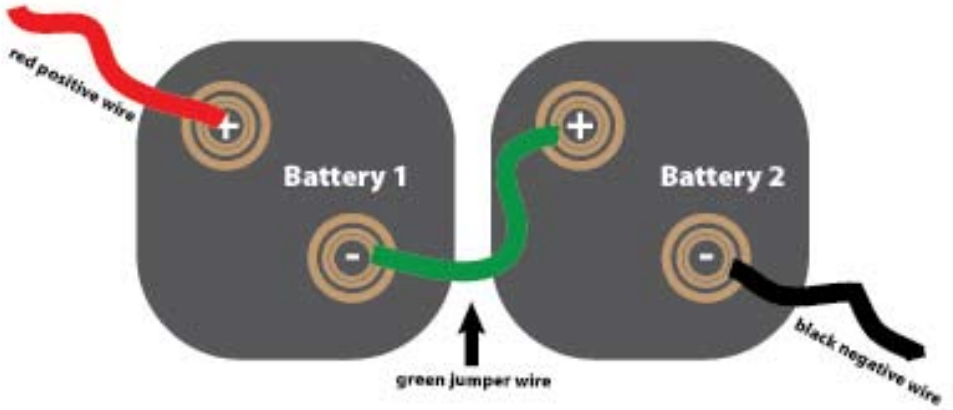


FIG 10.

CORRECT BATTERY CONFIGURATION



CORRECT SWITCH ANGLE



PROCESS 4

GEAR PLATE ASSEMBLY

1. Unscrew the top allen screw from the shaft collar. There are two in the same hole to prevent loosening. Leave the bottom screw in place (FIG 11.) After placing the gear plate onto the shaft tighten down the bottom screw. Then place the top screw in the same hole and tighten down as well. Repeat for hole number two. (FIG 12.)



FIG 11.

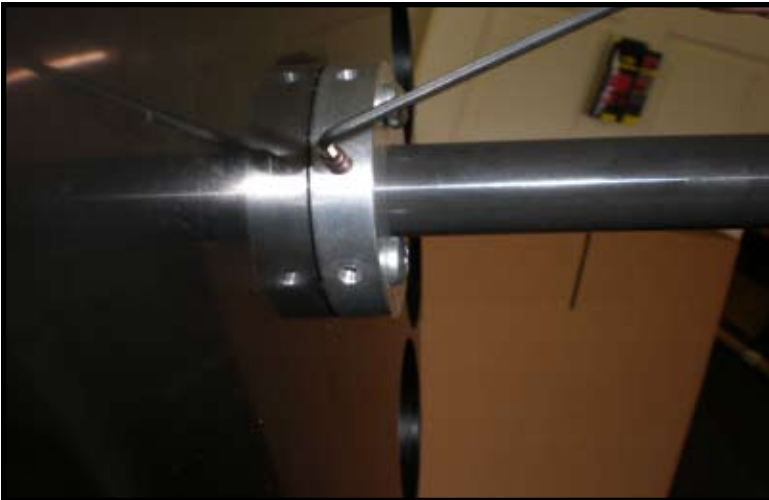


FIG 12.

PROCESS 5

FRONT PLATE ASSEMBLY

1. Slide the front plate shaft collar onto the shaft.(FIG 13.)



FIG 13.

2. Slide the front plate onto the shaft making sure it is flush with the front of the shaft.(FIG 14 & 15.)



FIG 14.



FIG 15.

3. Lock the collar in place with the 5/32 allen screw.(FIG 16.)



FIG 16.

3. Insert the 3/8 bolt and washer on the end of the shaft and tighten(FIG 17.)



FIG 17.

PROCESS 6

INSTALLING THE BARRELS

1. Slide the barrels in place as shown. (FIG 18.)



FIG 18.

2. Lock the barrels in place with the supplied screws. There are two per barrel (FIG 19.)

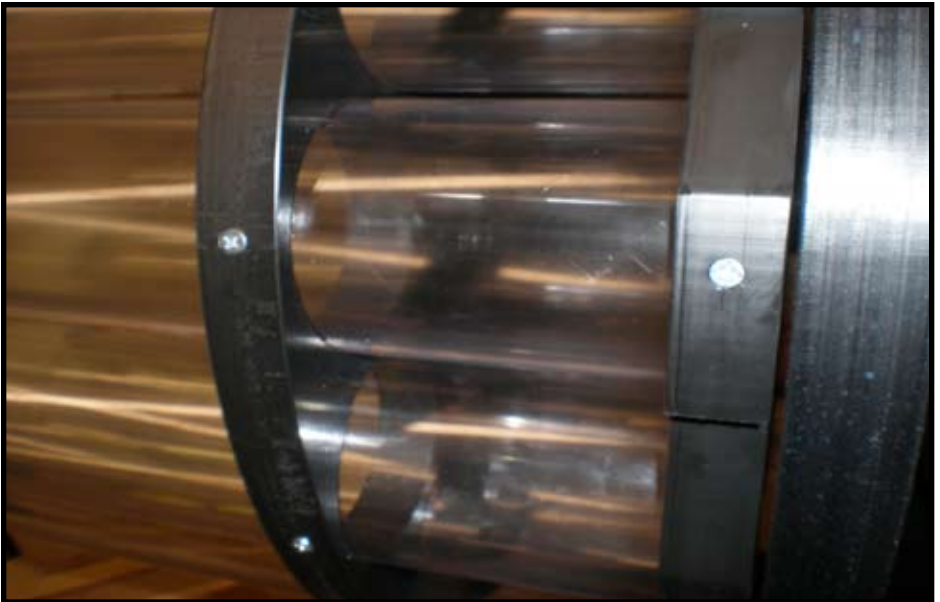


FIG 19.

PROCESS 7

INSTALLING THE PULLEY and BELT

1. Place the pulley onto the back of the shaft and line it up flush with the end of the shaft (FIG 20.)



FIG 20.

2. Tighten the set screw with 5/32 allen wrench(FIG 21.)

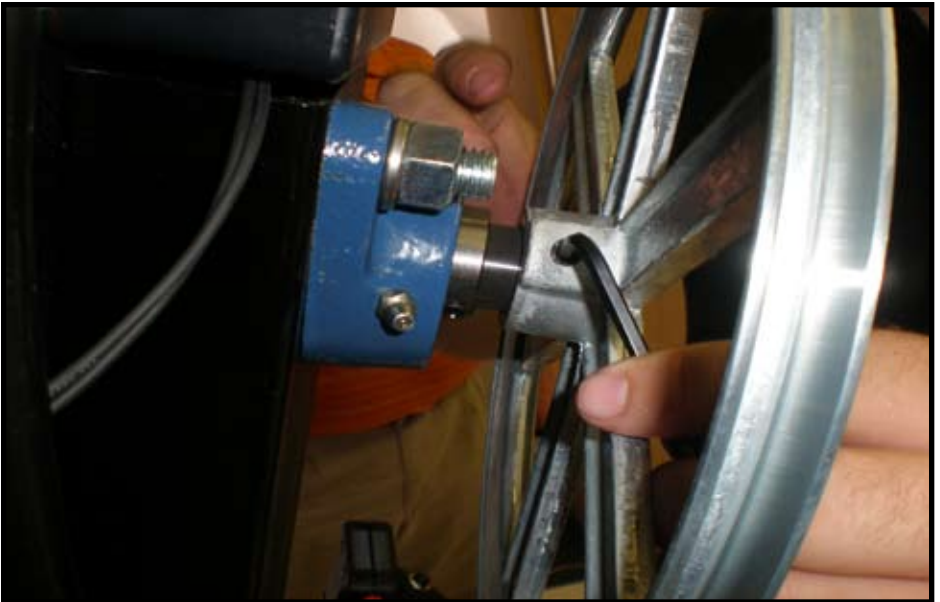


FIG 21.

1. Place the belt on the small pulley then load on the large pulley and spin clockwise to seat the belt.(FIG 21.)



FIG 21.



FIG 22.

PROCESS 8

INSTALLING THE CRANK

1. Slide the crank onto the brass shaft. Thread the set screw through the shaft and tighten. (FIG 23.)

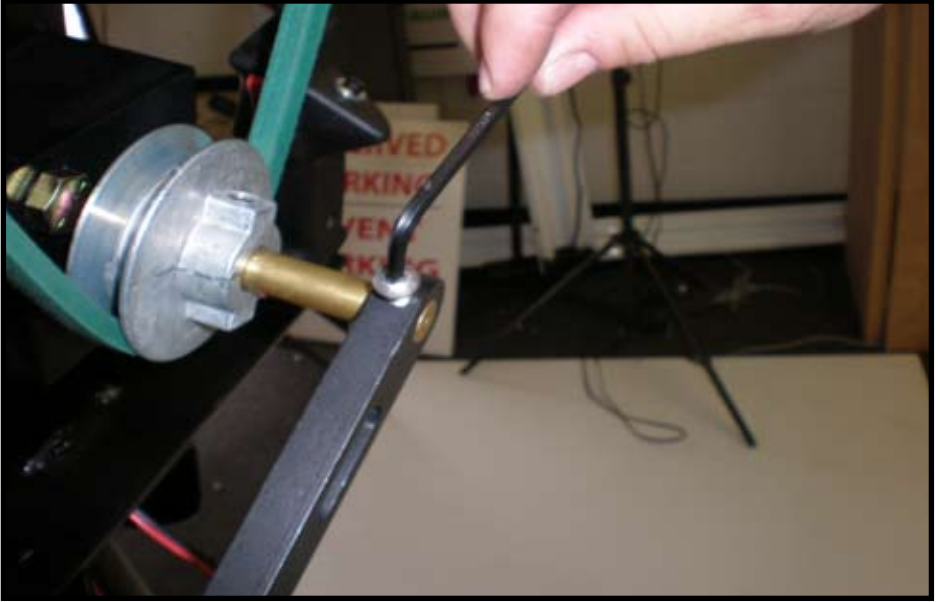


FIG 23.

